

—CASTING A CENTURY-OLD BRAND—



Nanjing Jilong Optical Communication Co., Ltd

2022

Jilong Complete Catalogue

Supplying of optical comunication products and providing of solutions

30 Year of Expertise



Jilong Communications started in 1993

About us

Since 1993, Jilong Communications has been tirelessly researching and developing fiber optic splicing technology for nearly 30 years, and has obtained more than 150 related patents...

For almost 30 years, Jilong has been tirelessly researching and developing optical splicing technology, and has obtained 150+ related patents.

Jilong communication took the lead in breaking the monopoly of foreign technology of fiber splicer, improved development of domestic splicer technology, and had made a great contributions to domestic 4G, 5G network construction and fiber telecommunication industry. Jilong communication, the pioneer of domestic optical fiber fusion splicer.



Jilong won the national "high-tech Technology Enterprise" title , and won the "Outstanding Contribution Enterprise of Nanjing" for many years, "JILONG" was identified as famous trademark of Jiangsu Province...



Since 1993, Jilong Communications has been tirelessly researching and developing fiber optic splicing technology for nearly 30 years, and has obtained more than 150 related patents...



Jilong Communication has successively obtained ISO9001 quality management system certification, ISO14001 environmental management System certification, Jilong products have passed the EU CE safety certification...

CONTENTS

Optical Fusion Splicer

JILONG 500E Mini	4
JILONG 280E All-rounder™	5
KL-400 Ribbon Fiber Fusion Splicer	6
KL-360T Backbone Optical Fusion Splicer	6
KL-500 FTTH Optical Fusion Splicer	7
KL-520 FTTH Optical Fusion Splicer	7
KL-530 Optical Fusion Splicer	8
KL-21C Automatic Waste Fiber Bin Fiber Cleaver	9
KL-22F Hand Held Optical Fiber Cleaver	9
KL-23F High Precision Fiber Cleaver	10
KL-51 Fiber V-groove	10

OTDR

KL-6200 FIBER MASTER OTDR	11
---------------------------	----

Testing equipments

OFI-45 Optical Fiber Identifier	12
OFI-50 Optical Fiber Identifier	12
VFL-22M Mini Visual Fault Locator	13
VFL-22P Pen Type Visual Fault Locator	13
OPM-22/22V Mini Optical Power Meter	14
OLS-22 Mini Optical Light Source	14
JBL-23 Optical Fiber Cleaver Blade	15
JBL-16 Optical Fiber Cleaver Blade	15

Optical Fusion Splicer

01

500E Mini FTTx Fusion Splicer

- Auto Splice & Auto Heat Function
- Tool-less Electrodes replacement
- World's most compact, Lightweight and Fast Design
- Extended-life electrodes, 5,000 splices (replaceable)
- Stable aerial operation Design
- 3-Year Extended Warranty



※ Operation platform be ordered separately

Applicable Fibers	SM(ITU-T G.652&G.657)/MM(ITU-T G.651)/DS(ITU-T G.653)/NZDS(ITU-T G.655)
Compatible Fiber/Cable	0.25~3.0 mm / indoor flat cable
Fiber Holder	Replaceable
Fiber Diameter	Cladding: 80-150 μ m , Coating: 100~1000 μ m
Typical Splice Loss	SM: 0.03dB / MM: 0.01dB / DS: 0.04dB / NZDS: 0.04dB / G.657: 0.03dB ★①
Return Loss	>>60dB
Splicing/Heating Time	SM Quick mode:8 sec/SM Average:10 Sec./Quick mode 18 sec.(SM G652 250 μ m 40mm sleeve) adjustable★②
Protection Sleeve Length	20mm, 30mm, 40mm, 50mm, 60mm
Battery	3400mAh Battery Capacity, Typical 120 Cycles (Splice&Heat) per Charge ★③
Electrode Life	5000 arcs (replaceable) ★④

★① With identical fibres(in room temperature). Measured by cut-back method relevant to ITU-T and IEC standards.

★② 0.25mm fiber,may vary depending on the battery status and operating environment.

★③ Splice & Heat cycles based on 40mm shrink tube

★④ Electrode life may vary depending on the operating environment.



High altitude operation adaptability. Not only suitable for aerial work, also suitable for conventional ground work in any environment

Working platform design for aerial work



Optical Fusion Splicer

02

280E All-rounder™ Middle Trunk Line Fusion Splicer

- 4 Motors Real Core Alignment
- Auto Splice & Auto Heat Function
- Tool-less Electrodes replacement
- Fully ruggedized for shock, dust, and moisture
- 3-Year Extended Warranty
- Extended-life electrodes, 5,000 splices, exchangeable without tools
- 6800mAh High capacity battery with 300 splices&shrinks per charge



※ Operation platform be ordered separately

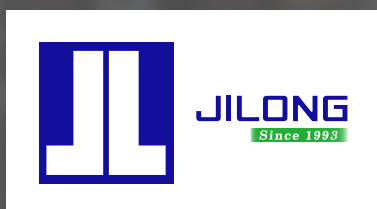
Applicable Fibers	SM(ITU-T G.652&G.657)/MM(ITU-T G.651)/DS(ITU-T G.653)/NZDS(ITU-T G.655)
Compatible Fiber/Cable	0.25~3.0 mm / indoor flat cable
Fiber Holder	Replaceable
Fiber Diameter	Cladding: 80-150 μ m , Coating: 100~1000 μ m
Typical Splice Loss	SM: 0.03dB / MM: 0.01dB / DS: 0.04dB / NZDS: 0.04dB / G.657: 0.03dB ★①
Return Loss	>>60dB
Splicing/Heating Time	SM Quick mode: 8 sec/ SM Average:10 Sec./Quick mode 18 sec.(SM G652 250 μ m 40mm Sleeve) adjustable ★②
Protection Sleeve Length	20mm, 30mm, 40mm, 50mm, 60mm
Battery	6800mAh Battery Capacity, Typical 300 Cycles (Splice&Heat) per Charge ★③
Electrode Life	5000 arcs (replaceable) ★④

★① With identical fibres(in room temperature). Measured by cut-back method relevant to ITU-T and IEC standards.

★② 0.25mm fiber,may vary depending on the battery status and operating environment.

★③ Splice & Heat cycles based on 40mm shrink tube

★④ Electrode life may vary depending on the operating environment.



Support the placement of cleaver operating platform, do cleaving and splicing work in one step

High Expansibility
fiber optic
cleaver operating
platform design



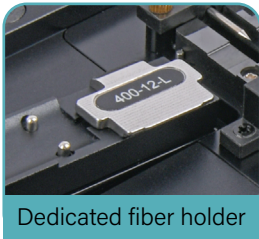
※ Operation platform be ordered separately

Optical Fusion Splicer

03

KL-400 Ribbon Fiber Fusion Splicer

- 25s Splicing, 18s quick heating
- 18s splice in Quick Mode
- 25s heat shrink time
- Extended-life electrodes, 5,000 splices, exchangeable without tools
- 7800mAh High capacity Li-battery with 300 splices/shrinks per charge



Dedicated fiber holder



Special V-groove design



Fiber Type	SM(ITU-T G.652&G.657) / MM(ITU-T G.651) / DS(ITU-T G.653) / NZDS(ITU-T G.655)
Compatible Fiber/Cable	Ribbon : 0.25~0.4 mm / Single : 250 μ m & 900 μ m
Fiber Cleave Length	8~16 mm
Splice mode	Max 128 modes
Typical Splicing Loss	SM: 0.03dB / MM: 0.01dB / DS: 0.04dB / NZDS: 0.04dB / G.657: 0.03dB ★①
Battery	7800mAh Battery Capacity, Typical 300 Cycles (Splice&Heat) per Charge ★②
Electrode Life	5000 arcs (replaceable) ★③

★① With identical fibres(in room temperature). Measured by cut-back method relevant to ITU-T and IEC standards.

★② Splice & Heat cycles may vary depending on the battery status and the operating environment.

★③ Electrode life may vary depending on the operating environment.

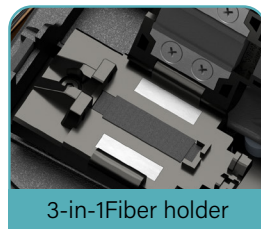
04

KL-520 FTTx Optical Fusion Splicer

- 9s Splicing time, 30s heating time
- Average splicing loss 0.01dB
- Real-time ARC calibration
- Four-motor alignment



Special designed V-groove



3-in-1 Fiber holder



3-IN-1 Fiber Holder

Fiber holder suitable for Bare Fiber/ 3.0mm, Jump Fiber/ Pigtail and Fiber/Rubber-insulated fiber cable



06

Optical Fusion Splicer

05

KL-360T Six Motor Core Alignment Fusion Splicer

- SIX Motors Real Core Alignment
- Fully ruggedized for shock, dust, and moisture
- 6s splice in SM Quick Mode
- 16s heat shrink time
- 3-Year Extended Warranty
- 5200mAh High capacity Li-battery with 300 splices/shrinks per charge
- Extended-life electrodes, 5,000 splices, exchangeable without tools

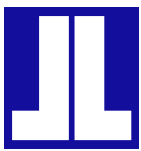


Applicable Fiber	SM(ITU-T G.652&G.657) / MM(ITU-T G.651) / DS(ITU-T G.653) / NZDS(ITU-T G.655)
Compatible Fiber/Cable	0.25~3.0 mm / indoor cable
Splice mode	Max 128 modes
Typical Splice Loss	SM: 0.02dB / MM: 0.01dB / DS: 0.04dB / NZDS: 0.04dB / G.657: 0.02dB ★①
Splicing Time	SM Quick mode : 6 sec / SM Average: 16 Sec.
Heating Time	Quick mode 16 sec.(SM G652 250µm 40mm Sleeve) adjustable
Battery	5200mAh Battery Capacity, Typical 300 Cycles (Splice&Heat) per Charge ★②
Electrode Life	5000 arcs, can be extended by using an electrode grinder ★③

★① With identical fibres(in room temperature). Measured by cut-back method relevant to ITU-T and IEC standards.

★② Splice & Heat cycles may vary depending on the battery status and the operating environment.

★③ Electrode life may vary depending on the operating environment.



JILONG
Since 1993

Six Motor Core Alignment

Automatic arc calibration by air pressure and temperature

Each core is under control when splice

Optical Fusion Splicer

06

KL-530 Middle Trunk Line Fusion Splicer

- 8s splice in SM Quick Mode
- 18s heat shrink time
- 3-Year Extended Warranty
- Fully ruggedized for shock, dust, and moisture

5200mAh High capacity Li-battery with 300 splices/shrinks per charge

Extended-life electrodes, 5,000 splices, exchangeable without tools



Special designed V-groove



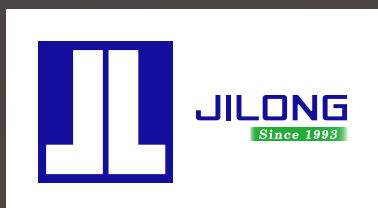
3-in-1 Fiber holder

Applicable Fibers	SM (G652) / MM (G651) / DS (G653) / NZDS (G655) / BIF (G657)
Fiber Count	Single mode
Fiber aligning method	Meticulous; Core; Clad; Manual
Splicing mode	Auto; Calibrate; Normal; Special
Typical Splice Loss	SM: 0.02dB MM: 0.01dB DS: 0.04dB NZDS: 0.04dB ★①
Splicing Time	SM Quick mode : 8 sec / SM Average: 15 Sec
Battery	5200mAh Battery Capacity, Typical 300 Cycles (Splice & Heat) per Charge ★②
Electrode Life	5000 arcs, can be extended by using an electrode grinder ★③

★① With identical fibres (in room temperature). Measured by cut-back method relevant to ITU-T and IEC standards.

★② Splice & Heat cycles may vary depending on the battery status and the operating environment.

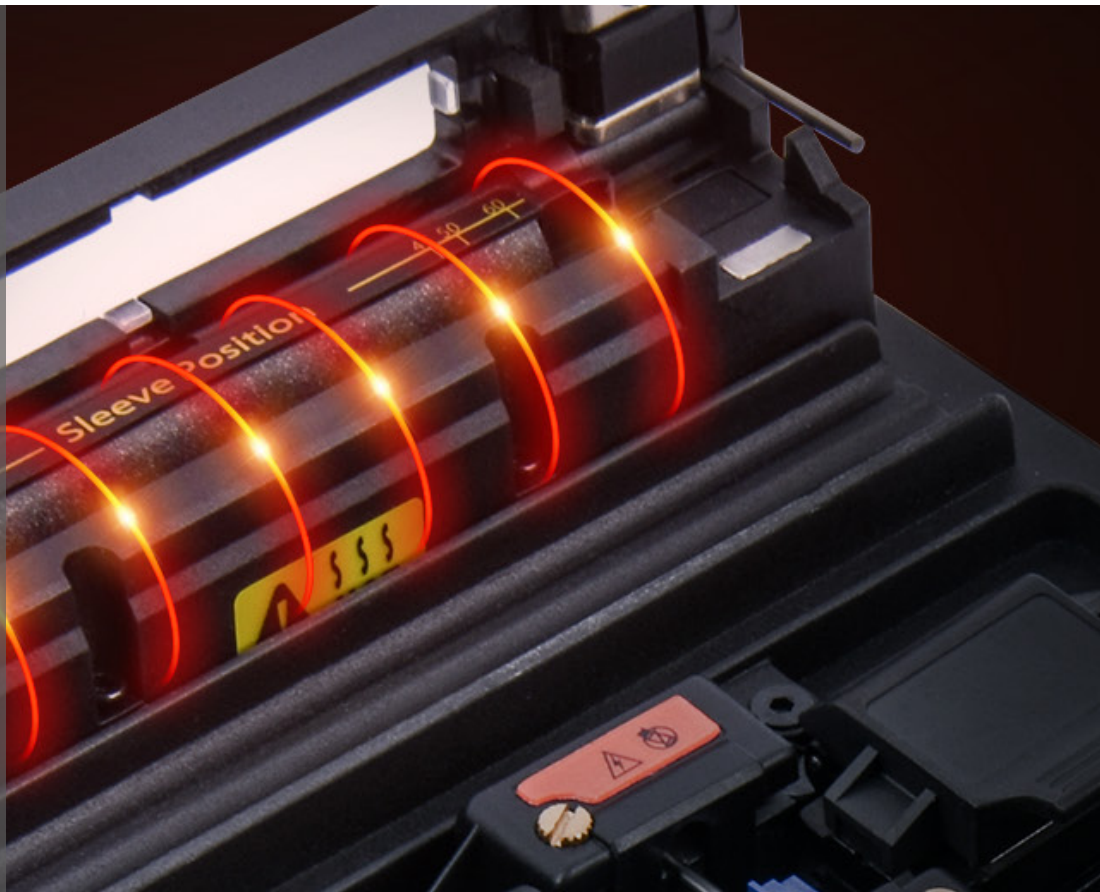
★③ Electrode life may vary depending on the operating environment.



18s Fast-heating time

Continuous high temperature heating,
compatible with multiple types
of heat shrink tubing

Each core is under control when splice



Optical Fusion Splicer

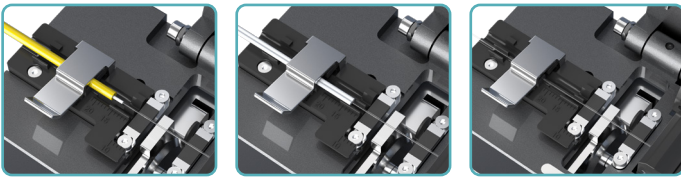
07

KL-21C Automatic Waste Fiber Bin Fiber Cleaver

- Auto fiber offcut bin
- Typical cleave angle 0.5°
- Blade life 48,000 cleaves
- Traditional bench top design, simple and easy to use
- Applicable to 250 μ m, 900 μ m, 3.0mm fiber cable and flat cable



All-in-1 Universal Fiber Holder



Fiber Material	Silica glass
Cladding Diameter	125 μ m
Cleaved Length	Single fiber: 8~20mm / Ribbon fiber: 10mm
Applicable Fiber Cable	Single fiber: 250 μ m, 900 μ m, 3.0mm fiber cable and flat cable Ribbon fiber: 2 to 12 ribbon fiber cable
Typical Cleaved Angle	Less than 0.5° ★①
Typical Blade Life	Total 48,000 fiber cleaves (replaceable) ★②
Off-cut Collector	Pre-fitted
Type of Offcut Bin	Auto
Auto Return	Pre-fitted

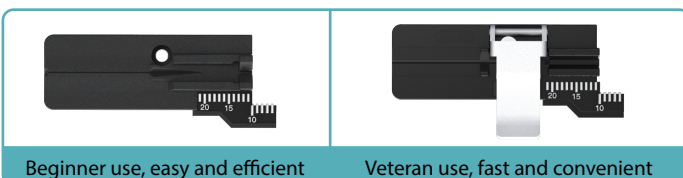
★① Cleaved angle may vary depending on the operating environment

★② Blade life is not guaranteed. It may vary depending on the operating environment

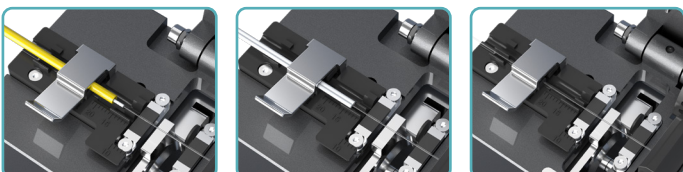
08

KL-22F Hand Held Optical Fiber Cleaver

- Hand held design
- Double fiber holders
- Typical cleave angle 0.5°
- Blade life 48,000 cleaves
- Applicable to 250 μ m, 900 μ m, 3.0mm fiber cable and flat cable



All-in-1 Universal Fiber Holder



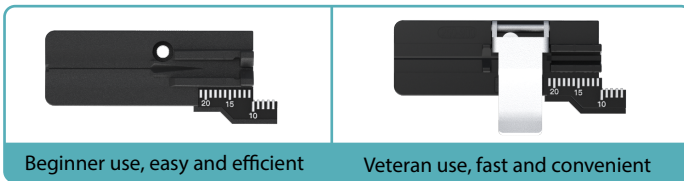
09

Optical Fusion Splicer

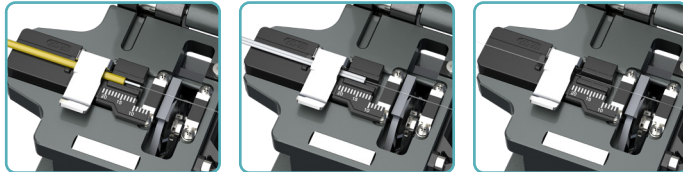
09

KL-23F High Precision Fiber Cleaver

- Traditional bench top design
- Double fiber holders
- Typical cleave angle 0.5°
- Blade life 48,000 cleaves
- Applicable to 250 μ m, 900 μ m, 3.0mm fiber cable and flat cable



All-in-1 Universal Fiber Holder



Fiber Material	Silica glass
Cladding Diameter	125 μ m
Cleaved Length	Single fiber: 8~20mm / Ribbon fiber: 10mm
Applicable Fiber Cable	Single fiber: 250 μ m, 900 μ m, 3.0mm fiber cable and flat cable Ribbon fiber: 2 to 12 ribbon fiber cable
Typical Cleaved Angle	Less than 0.5° ★①
Typical Blade Life	Total 48,000 fiber cleaves (replaceable) ★②
Off-cut Collector	Pre-fitted
Type of Offcut Bin	Manual
Auto Return	Pre-fitted

★① Cleaved angel may vary depending on the operating environment

★② Blade life is not guaranteed. It may vary depending on the operating environment

10

KL-51 Fiber V-groove

- Splice loss less than 0.05dB (SM)
- Two positioning seats (adjustable)
- High-precision V-groove alignment system
- Adapt to various cladding fibers

Product display



OTDR

11

KL-6200 FIBER MASTER OTDR

- Access network testing
- Long-haul network testing
- 1m Event dead zone
- 32dB Dynamic range
- FTTx/PON testing through splitters
- All new UI design with innovation
- Dual wavelengths testing
- Link Map & Pass/Fail judgment functions
- Built-in OPM、SLS、VFL、RJ45、FIP modules



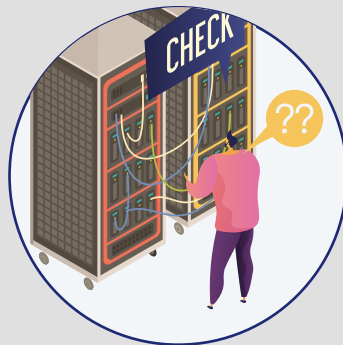
Four test modes meet your measurement needs

Real-time test:

Monitors link measurement information, but does not analyze event information.

Average test:

Fixed time measurement, the results and event information will be analyzed after the measurement.



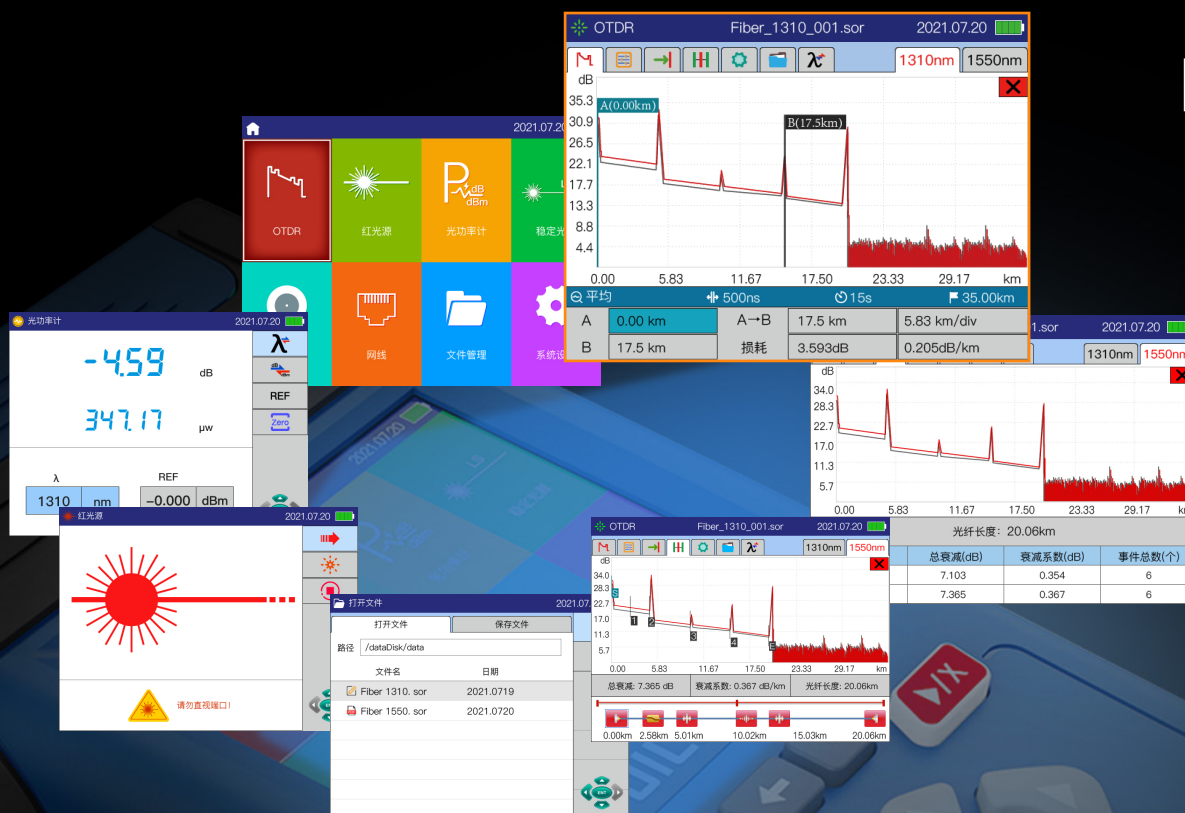
Intelligent automatic

It is convenient for beginners to quickly complete the test



Expert Manual Mode

Select the expert manual mode to test



Brand-new UI Design

12

OFI-45 Optical Fiber Identifier

- Identify dominant signal direction
- Universal for SM & MM fiber
- Easy operation & practical
- All-metal fuselage, CNC highly processed
- LED display, uniform light, clear display
- Recognizable 2kHz/ 1kHz/ 270Hz signal type with beeping sound
- 4 Kinds of chucks. Easy to operate and change; Suitable for 0.25/ 0.9/ 2.0/ 3.0mm fiber



4 Kinds of chucks, easy to change



3mm Patch cord



2mm Patch cord



900um Tight tube fiber



250um Bare fiber

13

OFI-50 Optical Fiber Identifier

- Identify dominant signal direction
- Universal for SM & MM fiber
- Light-weight, compact structure, easy to carry
- Simple and practical operation
- Ergonomic design, automatic test by pull fixture switch
- Recognizable 2kHz, 1kHz, 270Hz signal type with beeping



4-in-1 Universal Chuck



3mm Patch cord



900um Tight tube fiber



250um Bare fiber

14

VFL-22M Mini Visual Fault Locator

- Pocket design, mini size
- Strong light source, strong penetrating power
- Silicone dust cap, not easy to break
- Measuring up to 30km, high stability
- With LED lights for dark environment
- Lithium battery USB-charging, safety and convenience



2.5mm Universal Connector



SC



ST



FC

15

VFL-22P Pen Type Visual Fault Locator

- Metal material, small and practical
- Silicone dust cap, not easy to break
- Measuring up to 30km, high stability
- 40h Continuous work
- Imported laser chip, strong and stable light source
- Hidden button, prevent accidental touch



2.5mm Universal Connector



SC



FC



ST

16

OPM-22/22V Mini Optical Power Meter

- Pocket design, mini size
- Accurate measurement ± 0.2 dB
- Network test, judge signal transmission
- VFL with 10mW (Only for OPM-22V)
- Lithium battery USB-charging/AA Batteries (optional)
- With LED lights for dark environment
- Continuous use 60h (only in optical powermeter mode)
- Automatic wavelength memory, 7 wavelengths (850/980/1300/1310/1490/1550/1625nm)



2.5mm Universal Connector



SC



ST



FC

17

OLS-22 Mini Optical Light Source

- Wavelength: 1310nm+1550nm
- Deft appearance, compact structure, easy to carry
- Simple and practical operation
- Ergonomic design, one hand operation
- Pocket design, mini size
- Equipped with led light, can work stable in the dark
- Continuous output, three modulation frequencies (270Hz/1kHz/ 2kHz)



2.5mm Universal Connector



SC



ST



FC

Accessories

18

JBL-23 Optical Fiber Cleaver Blade

- Tungsten steel refining and processing
- Cleave angle $\leq 0.5^\circ$
- Durable, up to 48000 cleaves
- Rotatable 24 cutting points, per point reaches 2000 cleaves



Featured material



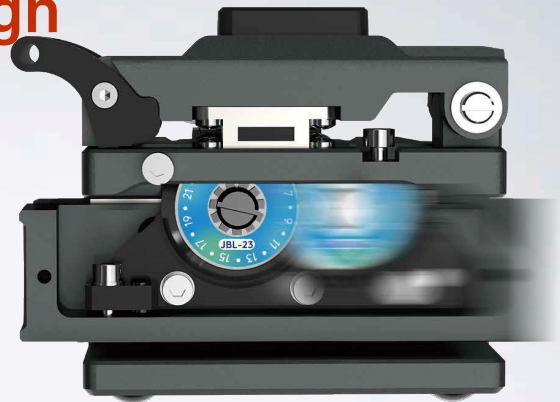
Sharp blade



Durable



Patented groove design



Rotatable Cutting Point	24
Blade Specification	Diameter 22*4*3.2mm
Blade Material	Tungsten steel
D (g/cm) ³	14.75
Blade Hardness	91.50HRA
TRS (MPa)	2200
Cutting Life (Single Point)	2000 ★①

★① Blade life changes by operating environment

19

JL-ELE-N Electrodes for Fiber Fusion Splicer

- Tool-less electrodes replacement
- Stable discharge 3000-5000 times
- Sharp top, uniform discharge, easy splicing
- The tail is made of high temperature resistant insulation material
- Imported tungsten steel material, high hardness, no deformation
- Hanging hole design, convenient offline platform, agent, store sales



Tool-less electrodes replacement



Imported tungsten steel



Hanging hole design



Appearance patent application number
202230339418.0

15

Based in China • Serve the world
Building Century-old brand—Jilong
Pioneer of fusion splicer

Contact us

Nanjing Jilong Optical Communication Co, Ltd.

Address: 12F, Changfeng Technology Building 2, NO.14Xinghuo Rd,
Pukou District Nanjing City 210032, China

Tel: +86 25 58880885

Mail: info@jilongot.com

Web: www.JILONGOT.com



Official Website