



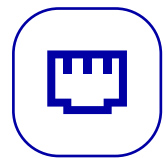
JILONG  
Since 1996

# OPM-22/22V

## Mini Optical Power Meter



Mini size



Network test



Measurement accuracy  $\pm 0.2$  dB



6 Wavelengths



Self-calibration



LED lighting



## Features Description

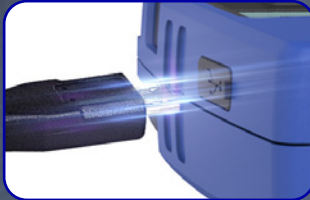
- Accurate measurement  $\pm 0.2$  dB
- Continuous use 60h (only in optical power meter mode)
- VFL with 10mW (Only for OPM-22V)
- Automatic wavelength memory, 6 wavelengths 850/1310/1490/1550/1625nm
- Pocket size
- Network test, judge signal transmission
- Universal adaptor for FC/SC/ST
- With LED lights for dark environment
- Lithium battery USB-charging/ AA Batteries (optional)

# Product Features



## LED light

Convenient for dark environment



## USB charging

Charging anytime, safe and stable



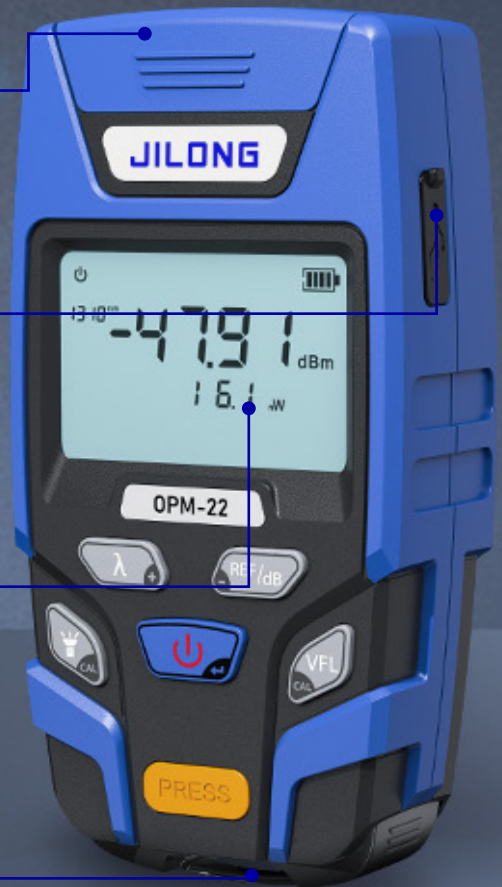
## Threshold setting and automatic judgment

Lower than the setting value, the screen will warning



## Network test

Accurate measurement, judge signal transmission



## 2.5mm Universal Connector



SC

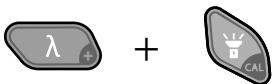


ST



FC

## Calibration Steps



Press two keys at the same time, and the screen shows 0-1, enter the calibration program



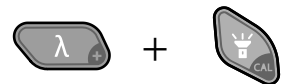
Increase by  $\lambda$  value



Decrease by REF/dB value



Press the switch to save the calibration value



Press two keys at the same time to exit the calibration procedure



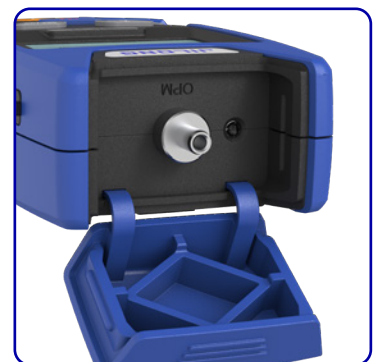
# Product Specification

Model	OPM-22	OPM-22V Multi-function all-in-one machine
VFL	--	10mw
Network test	Interface RJ-45	
Wavelength	800 ~ 1700 (nm)	
Detector type	InGaAs	
Connector	2.5mm Universal connector	
Power measurement range	-70 ~ +10 dBm / -50 ~ +26 dBm	
Uncertainty	$\leq \pm 0.25$ dB	
Linearity	$\leq \pm 0.1$ dB	
Standard wavelength	850/ 1300/ 1310/ 1490/ 1550/ 1625 (nm)	
Display resolution	0.05 DPI	
Operating temperature	-10 ~ +60 (°C)	
Storage temperature	-25 ~ +70 (°C)	
Auto-off time	10 min	
Operating hours	Battery power: 20 hours (only the optical power meter works)	
	Rechargeable: 60 hours (only the optical power meter works)	
LED	Support	
Power	Built-in rechargeable lithium battery 1000mAh / AAA 1.5V batteries x 2	
Charging port	USB (only for charging model)	
Dimensions	112 x 57 x 31 mm	
Weight	120 g (Including batteries)	

The above data were obtained by Jilong Laboratory in 20°C



# Product Display



## Contact us

**Nanjing Jilong Optical Communication Co., Ltd**

Address: 12F, Changfeng Technology Building 2, NO.14 Xinghuo Rd, Pukou District Nanjing City 210032, China

Tel: 025-85880035

Mail: sales@jilongtx.com

Web: www.JILONGOT.com



Focus on official website for more