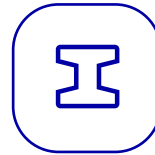




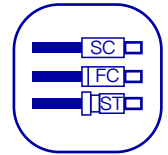
JILONG
Since 1996

VFL-22P

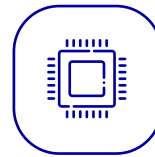
Pen Type Visual Fault Locator



Metal
material



2.5mm Universal
interface



Upmarket chip
strong light source



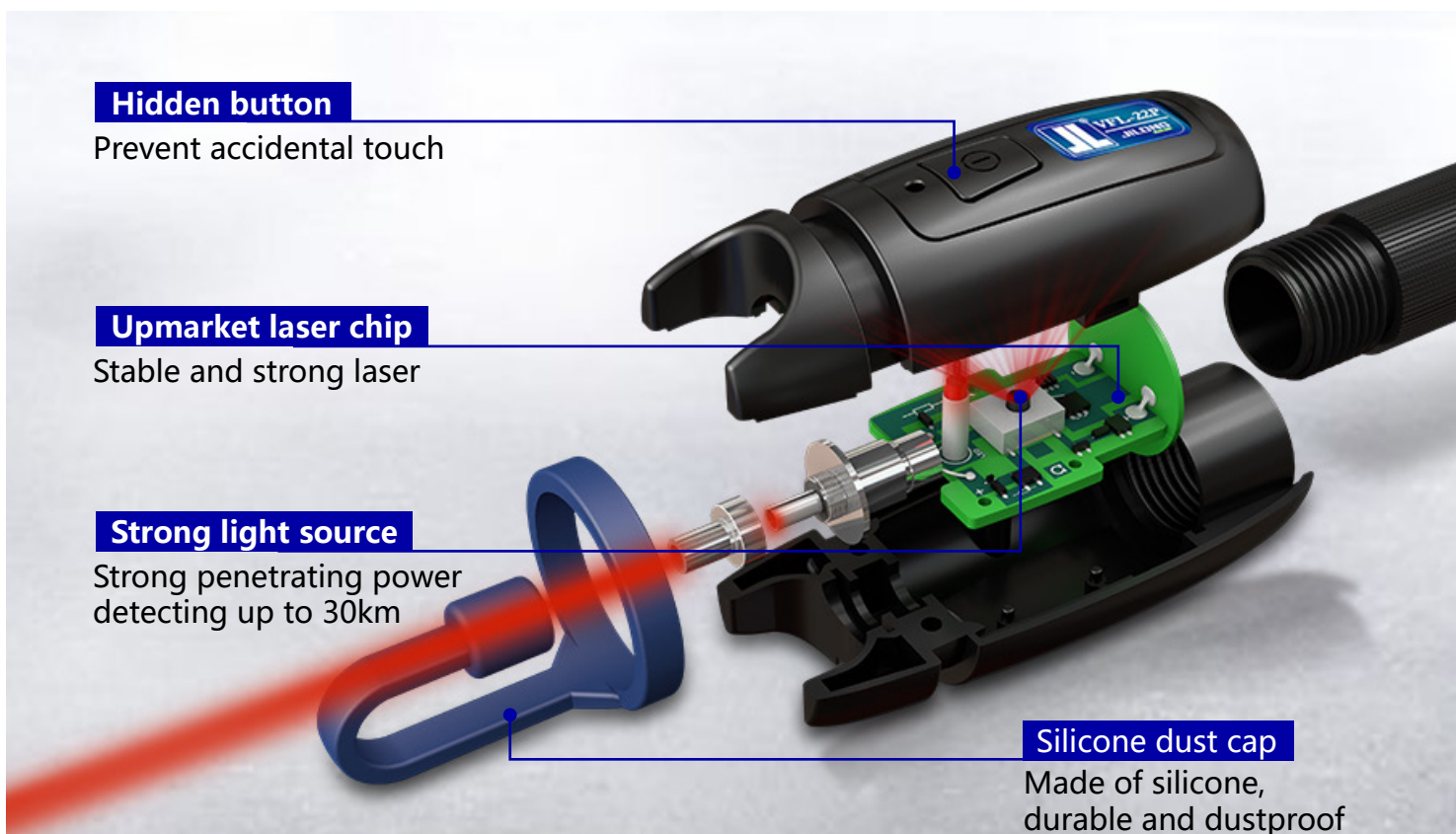
Pulsed and CW
operation



Features Description

- ◆ 40h continuous work
- ◆ 2.5mm universal adaptor for FC/ SC/ ST
- ◆ Measuring up to 30km, high stability
- ◆ High quality laser chip, strong light source
- ◆ Silicone dust cap
- ◆ Metal material, small and practical

Product Features



2.5mm Universal Connector



Product Parameter

Model	VFL-22P-10	VFL-22P-20	VFL-22P-30
Output power	10mW	20mW	30mW
Detection distance	8-10km	15-20km	25-30km
Operating hours	12H	10H	4H
Wavelength	650nm		
Laser type	LD		
Modulation frequency	CW / 2Hz		
Operating temperature	-20 ~ +60 (°C)		
Power	AA batteries x 2		
Dimensions	197 x 30 (mm)		
Weight	115g (Including batteries)		

The above data were obtained by Jilong Laboratory in 20°C



Product Display



Contact us

Nanjing Jilong Optical Communication Co., Ltd

Address: 12F, Changfeng Technology Building 2, NO.14
Xinghuo Rd, Pukou District Nanjing City 210032, China

Tel: 025-85880035

Mail: sales@jilongtx.com

Web: www.JILONGOT.com



Focus on official
website for more